



Bayside Christian College

"Unity and Maturity in Christ"



Bayside Christian College ANNUAL REPORT 2017

Table of Contents

Introduction	3
Our Purpose	4
Chair's Report	5
Principal's Report	7
College Leadership.....	8
Board	8
Senior Executive	8
Teaching Staff Statistics	9
Teaching Staff Attendance	9
Teaching Staff Retention.....	9
Teaching Staffing Numbers.....	9
Teaching Staff Qualifications.....	9
Professional Learning	11
2017 Bayside Christian College – Staff.....	11
Students	12
Enrolments.....	12
Attendance.....	14
NAPLAN	15
Senior Secondary Outcomes	16
Post-School Destinations (Year 12, 2017).....	17
Satisfaction Surveys	18
Funding Information.....	19
Income	20
Expenditure	21

Introduction

Bayside Christian College is a coeducational independent Christian School set on two sites on the eastern boundary of Peninsula Link either side of Robinsons Road, Langwarrin South. Bayside Christian College has been established by the Association for Christian Education of Frankston Inc. to support families who would like schooling supporting Biblical values.

A Bayside Christian College journey begins for prospective families with the Early Learning Centre (ELC), which offers both 3 year old and 4 year old Kindergarten programs, and concludes in Year 12 with the opportunity to complete either the Victorian Certificate of Education (VCE) or the Victorian Certificate of Applied Learning (VCAL).

Bayside Christian College provides an education that embraces Christian values and a Biblically-based curriculum. Every child is seen as an image bearer of God, endowed with unique gifts and abilities. Whilst our aim is that all children reach their full potential, we recognise that learning takes place in a variety of ways – academically, socially, emotionally, physically and spiritually.



Our Purpose

Bayside Christian College is an outworking of the Association for Christian Education of Frankston Inc. This Association was established to maintain a school or schools to provide Christian education for children based upon God's work.

The school(s) conducted by the Association is a community which exists to help parents equip their children for effective, God-glorifying lives as Christians in the world by:

- i. leading students into the service of God and of others as a thankful response to the work of God in Christ;
- ii. nurturing in students the development of a Biblical understanding of the world and of life;
- iii. establishing an educational environment that is characterised by faith, hope, love, joy, peace and service;
- iv. helping students to discover and develop their own God-given abilities and to recognise and respect those of others;
- v. showing students that knowing their strengths and limitations, is part of achieving a realistic, positive self-image;
- vi. promoting a striving for excellence in their lives.

(Constitution, pp. 4–5)



Chair's Report

On behalf of the Board and Association, I would like to firstly thank all our families connected to the College for your ongoing support and partnership over the last 12 months. The Board remains greatly encouraged by the growth of our College.

I would also like to thank our teaching, administrative and operations staff for their commitment throughout the year and ongoing dedication to the College. As a College community we are greatly blessed by the contributions made by our staff, who collectively show an 'above and beyond' commitment towards the development of the College and its students. In thanking staff, I wish to give particular recognition to our Principal, Dr Chris Prior, and the Executive Leadership Team for their valued leadership over the development of our College over the last year.

Following the AGM of 2017, where Brad Wyatt stepped down from his position on the Board after three years of much valued service, the Board was most keen to ensure our numbers were bolstered by new appointments. As such, the Board was thankful to both Mr Trent Jones and Mr Tim Vass for their acceptance of our invitation to join our meetings over the recent 12 months. Both Trent and Tim are firmly passionate about the future of the College and have made excellent contributions to our activity throughout the year. With both Trent and Tim having completed 12 months of membership to the Association, both have nominated for official election to the Board by the Association at the forthcoming AGM. On behalf of the Board, I would certainly give my warm endorsement to the Association for both nominations.

In addition to the attendance of Trent and Tim, the Association has been represented on the Board by the following members:

- Troy Gaskell – Board Vice Chair
- Gerdien Pinxt – Board Secretary
- Joe Harmelink – Board Treasurer
- Nathan Hooper – Board Chair

Over the last 12 months, the Board has again been focused on progressing our development projects on the new adjacent property. Following the completion of our Trades Skills Centre, focus shifted towards the Years 7 & 8 Building, which was also unfortunately delayed on completion to its original schedule. Following the persistent effort of our Land Development Committee, and likewise of our Principal Dr Prior and Business Manager Roger Simons, the Board is greatly looking forward to the forthcoming official opening of the Years 7 & 8 Learning Centre. The Centre represents the completion of our second building project on the new property and brings us closer towards our keen desire to develop excellent learning facilities for Secondary students.

In December 2017, it became well apparent that a new season of leadership was on the horizon for the College following the resignations of both Roger Simons, our College Business Manager, and Chris Prior, our College Principal. Both men have served our College with distinction and had a significant impact on our growth.

Speaking firstly in appreciation to Roger, on behalf of the Board, I would like to acknowledge the astute manner in which he has managed our College finances and facilities over his 7+ years of service to the College. Throughout his time, Roger has focused on ensuring a stable

financial basis to allow the College to pursue ongoing development and continuously improve the quality of our learning facilities. Since commencing with the College, Roger has been engaged with building and development projects on a near continuous basis, where his astute commercial acumen and Godly wisdom has been well applied. Roger's keen ability to achieve financial support for the College through both federal and state government funding schemes has been well appreciated, and ensured the continuation of our development programs. In leaving the College, Roger will be taking up the role of Business Manager for fellow CEN member school, Chairo Christian School, at the conclusion of Term 2 2018.

At this time, the College will also farewell Dr Chris Prior as College Principal. Since commencing as Principal, Chris has had a defining influence across the College community and greatly enhanced our distinctiveness in pursuing education from a Biblical perspective. Developing the quality of teaching practice has been a particular hallmark of Chris' leadership, with our College staff having grown considerably in confidence and ability to teach with excellence from a Christian perspective. Chris will leave the College at the end of Term 2 2018 and relocate to Sydney to take up a directorship role at Excelsior College.

The Board will ensure that both staff and the broader College community are given the opportunity to thank both Chris and Roger for their outstanding contributions to the College before their departure in July.

With the impending departure of both key leaders, the Board has been firmly engaged with recruitment actions over recent months. Given the significance of ensuring outstanding candidates are placed for both key leadership roles, the Board has undertaken to engage our national affiliation organisation, Christian Education National, to support our recruitment. CEN has commenced with supporting the Board for recruitment administration requirements and through providing direct support for candidate assessments and interviews. With the support of CEN, the process for recruiting two new key leaders for the College is well progressed, with the Board confident of a successful outcome for both roles.

On behalf of the Board, I would like to thank the Association membership and broader College community for their ongoing commitment to Bayside Christian College.

Nathan Hooper
BOARD CHAIR



Principal's Report

Started by Christian parents, in 2017 we celebrated the 35th Anniversary of Bayside Christian College. As a community, it has been heartening for our current community to reflect on our past and be reminded that we are here now because of the efforts, the prayerful vision and the hard work of past communities. During this year, there were several celebrations that honoured our Christian heritage; a heritage that continues to influence the everyday life of the College. The 35th Anniversary Thanksgiving Service in April was a true celebration of what God has done as the current community gathered with many of the College pioneers. A highlight was the long applause for the pioneers as they accepted a small memento that captured part of the history of the College. Then, in September, we held a College Reunion Day where past and present families and staff were able to connect and reconnect, remember through the various displays, and tour the new property, which will one day be our Secondary School campus.

A major milestone of the College was that we officially opened our Trades Skills Centre. This allowed us to have students in the Senior School undertake a Certificate II in Kitchen Operations under the direction of our first Trades Skills Centre staff member, Mr Scott Megee. The Kitchen Operations course is a two-year program that can form part of either a VCAL or VCE program. As part of their assessment, students need to cater a number of events. One such event was the Year 12 Presentation Night. The quality of their finger food added to the marvellous atmosphere of this celebration of the students' final year at the College.

As Principal, I often have people ask me or comment on what it means to be a Christian College. Like different Christian churches, each Christian school has particular aspects of the Christian faith that are emphasised. What I love about Bayside Christian College is that we look to honour, as it says at the start of Psalm 24, that 'the Earth is the Lord's and everything in it'. For us, this includes education and, as such, we strive to ensure that the message of God's love for us, and the calling to live by God's standards, is evident in our staff training, across the community and in the curriculum.

In remembering 2017, I would like to honour our farewelling staff: our Head of Primary, Mrs Joy Plummer, Mrs Cherylynn Playsted (Years 1/2), Mr Brendan Elliget (retired), Mrs Janniene Woodbridge (early retirement), two of our Learning Support Staff, Mrs Lynda Marshall and Mrs Sally Cheetham, and finally, Miss Ellen Baker, who completed a short-term position.

New to Bayside Christian College in 2017 were Mr Scott Megee and Mr Gino Ciancio, both teaching Hospitality in the Trades Skills Centre, Mr David Mallen (Music), Mr Jordan Partridge (Years 1/2), Miss Jennie Taylor (Prep), Miss Melissa Scott (ELC), Mrs Amanda McDonald and Ms Sheree Astuto (Learning Support). I would also like to thank Mrs Glenys Bailey for accepting the position of Head of Primary. We ask for your continued prayers as these new members of the team learn more about Christian schooling to support our vision for education.

Christopher Prior
PRINCIPAL



College Leadership

Board

The College is governed by an independent Board of Directors elected by the Association. The Board of Directors is responsible for the overall vision and direction of the College, while day-to-day operations and planning are entrusted to the Senior Executive.

The 2017 Board of Directors comprised of:

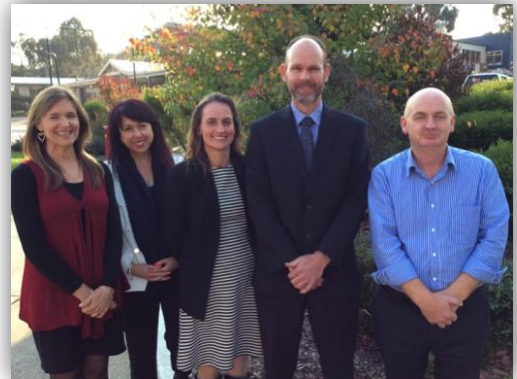
- Nathan Hooper (Chair)
- Troy Gaskell (Vice-Chair)
- Gerdien Pinxt (Secretary)
- Joe Harmelink (Treasurer)
- Trent Jones



Senior Executive

The Senior Executive Team of the College, entrusted to make the day-to-day decisions, for 2017 consisted of:

- Chris Prior (Principal)
- Toni Steinbergs (Deputy Principal & Head of Teaching and Learning)
- Shirley Patterson (Head of Secondary)
- Joy Plummer and Glenys Bailey (Head of Primary)
- Roger Simons (Business Manager)



Coordinators were appointed for leadership of the sub-schools of:

- ELC
- Prep-Year 2
- Years 3-4
- Years 5-6
- Years 7-8
- Years 9-10
- Years 11-12

Teaching Staff Statistics

Teaching Staff Attendance

Staff attendance for the 2017 academic year, based on actual teacher attendance as a percentage of total possible attendance, was 97.4%.

Teaching Staff Retention

During 2017, we commenced classes in the new Trades Skills Centre. Mr Megee and Mr Ciancio were employed as our new Hospitality teachers. Elsewhere in the College, we welcomed Mr Mallen, Mr Partridge and Miss Taylor to our teaching staff. During the year, Mrs Playsted (Primary) moved interstate, and Mrs Joy Plummer (Head of Primary) left to take on a Learning Support Coordination role at another school. At the conclusion of the year, Mr Elliget (Secondary) and Mrs Woodbridge (Teacher Librarian) both retired. We would also like to thank Miss Baker (Secondary), who was employed on a fixed-term parental leave replacement position. Our teaching staff retention rate was 92.5%.

Teaching Staffing Numbers

Throughout 2017, 56 teaching staff were employed at the College, with a full time equivalent of 42.6 at the end of the year. The College does not currently have any indigenous personnel.

Teaching Staff Qualifications

The below list includes all teachers employed at Bayside Christian College in 2017.

NAME	SUB SCHOOL	QUALIFICATIONS
Glenys Bailey	Primary	DipT(Prim), BEd
Ellen Baker	Secondary	BNur, BTeach (Sec)
Timothy Baker	Secondary	BEd
Kerri Bernon	Primary/Secondary	BEd
Ken Berry	Secondary	BEd
Daniel Briglia	Secondary	AssocArts, BSc(ExSc), GradDipEd(Sec)
Sonja Campbell	Secondary	BA, BBus, GradDipEd(Prim)
Lara Cartledge	Secondary	BSc, GradDipEd
Jennie Champion	Primary	BSocSc(Lib), GradDipEd(Prim)
Gino Ciancio	Secondary	DiplndDes, GradDipEd, AdvDipGrapDes
Catherine Cloherty	Secondary	BA(Psych/Psychophys), GradDipAppSc(Psych), GradDipEd(Sec)
Maree Coates	Primary	BAppSc(OH&S), GradDipEd
Rachelle Cooper	Secondary	BASocSc, GradDipEd
Lara Curtis-Morris	Secondary	BBus(Mgt), GradDipEd(Sec), MEd
Caroline De Haan	Primary	BEd(Prim)
Donna Doherty	Primary	BA, DipEd(Prim)
Joanne Dyer	Primary	BA, BEd(Prim)

Chris Elkington	Primary	BEd(Prim)
Brendan Elliget	Secondary	BAppSc, GradDipEd
Sharyn Hadlow	Secondary	BSc, BEd
Sue Higgs	Primary	DipTeach(Prim), BEdStudies
Karen Hooper	Primary	DipTeach(Prim), GradDipEd(Mus)
Alex Hopkins	Secondary	BA(Hons), GradDipEd, PhD
Josephine Hopkins	Primary	BA, MSpeechPath, GradDipEd(Prim)
Jay Johnstone	Secondary	BTh, MTh, GradDipEd (Prim)
Zacchaeus Klan	Primary	BEd(Prim)
Joel Kong	Secondary	BDes(IndDes), GradDipEd
Jonathan Lake	Secondary	BA, GradDipEd(Sec)
Anna Lam	Primary	BBus(Acc)/BBus(B&F), GradDipEd(Prim)
Andy Lancaster	Secondary	BA(VisArts), BEd(Prim)
David Mallen	Primary/Secondary	BMus/BCom, AMus(Piano), MTeach(Sec Mus/Prim)
Donna Martin	Primary	DipT(Prim), BEdSt
Angie Mathews	Secondary	BAppSc, BTeach(Sec)
Paul Mathews	Secondary	BA, GradDipEd(Sec)
Alicia McCann	ELC	BEd(ECD)
Scott Megee	TSC	CertIV Hosp, DipVET
Madura Nadarajah	Primary	BBusSt, GradDipEd(Prim)
Catherine Newton	Secondary	DipT(Prim), BEd(Conv)
Sari Newton	Primary/Secondary	BA, DipChildSev, GradDipEd(Sec)
Jordan Partridge	Primary	BA Sport&OutRec, BEd
Shirley Patterson	Secondary	BSocSci(Psych)(Hons), GradDipEd, GradDipMin
Joanne Piening	Primary	BEd(Prim)
Cherylynn Playsted	Primary	BEd(Prim)
Michael Pleiter	Secondary	BEd(PhysEd/HlthEd)
Joy Plummer	Primary	DipTESOL, BEd(Prim), MEd
Christopher Prior	Principal	BAgrSci, BMin, MA(Theol), MEd, GradDipEd(Sec), EdD
Fiona Ryan	Primary	BA, GradDipAppPsych, GradDipTL
Toni Steinbergs	Deputy Principal	DipTeach, BEd, MLeadership
Russell Svigos	Secondary	DipTeach(Prim)
Jennie Taylor	Primary	BOccTher, MTeach
Nickie Turner	ELC	BEd(Bth-5)
Sam Waldron	Secondary	BA(Global), GradDipEd(Prim)
Chay Williamson	Secondary	BDes, GradDipEd(Sec)
Joel Williamson	Secondary	BT, BMus
Janienne Woodbridge	Secondary	BA, DipEd, MEd(TL)
Sara Wright	Primary	BMin, GradDipEd(Prim)

Professional Learning

To improve school practice, staff need professional development. The professional development program for staff at the College is described under three headings:

General staff professional learning. Staff undertake training that is consistent with College policy in areas including first aid, anaphylaxis, child safety, occupational health and safety, and leadership.

Area or subject specific training. Educational staff undertake training, often with external providers, in a range of areas including in subject specific areas such as English, Mathematics, and Physical Education. Staff also have access to professional learning in curriculum and/or classroom practice, for example, in learning about dyslexia, learning needs, careers education, and Big Write.

Practice consistent with our Christian Biblical worldview. The staff of Bayside Christian College engage in professional learning with affiliated schools (Christian Education National). In 2017, these included a Victorian state conference, a leadership conference, and a teaching and learning conference. In addition, approximately 15 teachers participated in units of study associated with a Master of Education (MEd) program.

In total, the College spent approximately \$100,000 on the professional learning of the Bayside Christian College staff team.

2017 Bayside Christian College – Staff



Students

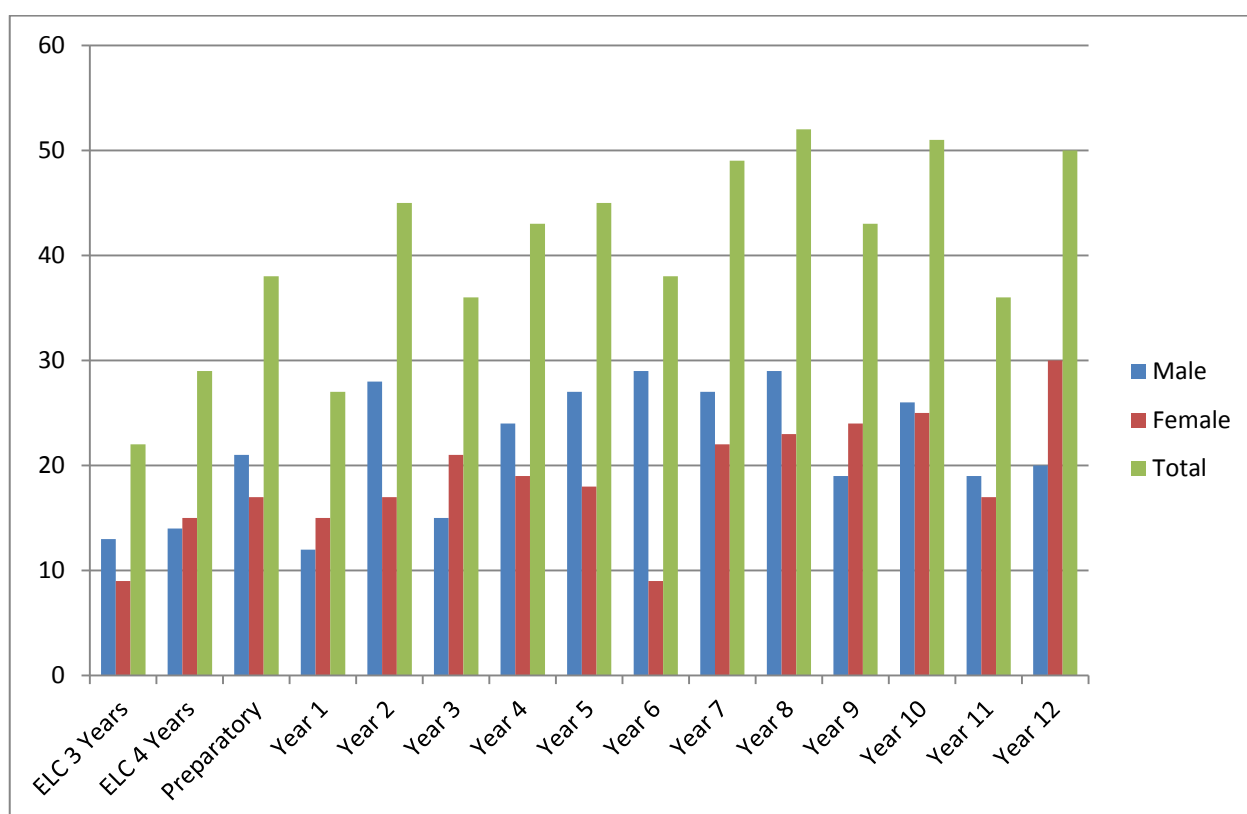
Enrolments

Bayside Christian College is a member of Christian Education National. A key understanding of our school and our broader movement of Christian schools is to partner with parents in the education of their children. This education is to be consistent with the Gospel message and help to equip students to be disciples of Christ, within the College and after their graduation.



The total number of student enrolments at Bayside at the time of the 2017 August Census was:

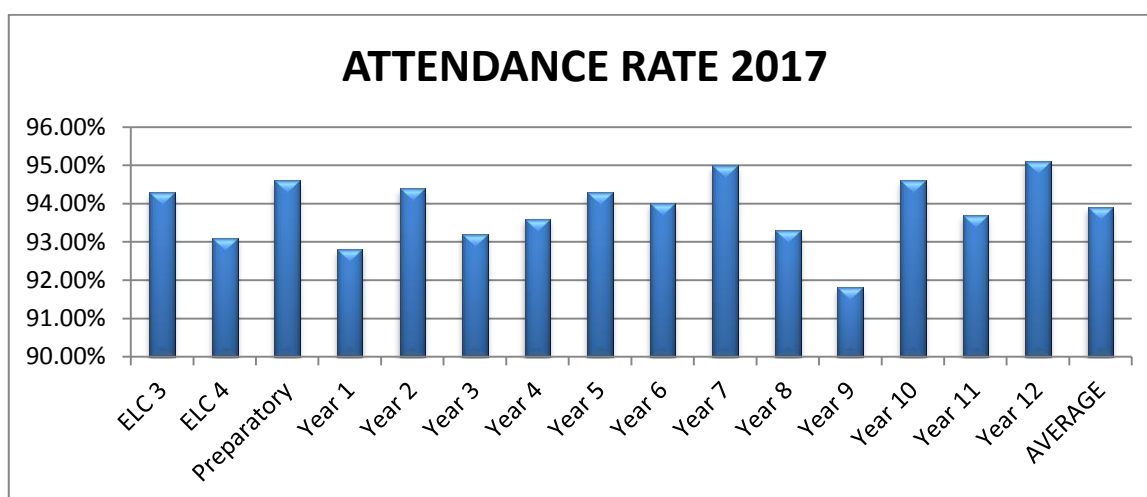
Year Level	Male	Female	Total
ELC 3 Years	13	9	22
ELC 4 Years	14	15	29
ELC Enrolments	27	24	51
Preparatory	21	17	38
Year 1	12	15	27
Year 2	28	17	45
Year 3	15	21	36
Year 4	24	19	43
Year 5	27	18	45
Year 6	29	9	38
Year 7	27	22	49
Year 8	29	23	52
Year 9	19	24	43
Year 10	26	25	51
Year 11	19	17	36
Year 12	20	30	50
Prep-Year 12 Enrolments	296	257	553
TOTAL ENROLMENTS	323	281	604



Attendance

Student attendance, relative to each Year level (from Prep to Year 12), is detailed in the table. It is based on the number of days students attended school relative to the number of possible school attendance days. In 2017, the overall mean average College attendance rate was 93.9%.

YEAR LEVEL	ATTENDANCE RATE
ELC 3	94.3%
ELC 4	93.1%
Preparatory	94.6%
Year 1	92.8%
Year 2	94.4%
Year 3	93.2%
Year 4	93.6%
Year 5	94.3%
Year 6	94.0%
Year 7	95.0%
Year 8	93.3%
Year 9	91.8%
Year 10	94.6%
Year 11	93.7%
Year 12	95.1%
AVERAGE	93.9%



When a student is absent, parents/carers may notify the College through a variety of avenues. The preferred method is via the Absence Line (03 5971 6798). Other methods include a telephone call, email, or in person to the College office or the class teacher. When a student is absent to an unsatisfactory degree, contact with the parent/carer is made to communicate the unsatisfactory attendance and to ascertain the reason for the absences. Unsatisfactory attendance is recorded on the student's file.

NAPLAN

Teachers at Bayside Christian College are involved in the continual monitoring of our students' academic performance, including the National Assessment Program of Literacy and Numeracy (NAPLAN) tests for students at Years 3, 5, 7 and 9. Monitoring is not confined to one test on one day, but rather is supported by a range of mechanisms, including some annual assessments such as those developed by the Australian Council for Educational Research and Allwell tests.

2017 NAPLAN Results (Proportion of students meeting or exceeding the National Minimum Standards)		2017	2016	2015
READING	Year 3	100%	100%	93%
	Year 5	98%	97%	97%
	Year 7	100%	96%	100%
	Year 9	95%	100%	97%
WRITING	Year 3	100%	100%	100%
	Year 5	93%	100%	97%
	Year 7	89%	94%	100%
	Year 9	95%	90%	87%
SPELLING	Year 3	100%	100%	100%
	Year 5	95%	100%	90%
	Year 7	98%	98%	90%
	Year 9	97%	90%	93%
GRAMMAR AND PUNCTUATION	Year 3	88%	95%	97%
	Year 5	91%	95%	90%
	Year 7	98%	94%	93%
	Year 9	97%	98%	83%
NUMERACY	Year 3	97%	100%	97%
	Year 5	98%	100%	100%
	Year 7	100%	98%	100%
	Year 9	97%	100%	97%

Senior Secondary Outcomes

Bayside Christian College students have the opportunity to participate in a wide range of subjects as part of either a Victorian Certificate of Applied Learning (VCAL) or Victorian Certificate of Education (VCE) program. The VCE subjects offered at Year 12 in 2017 were:

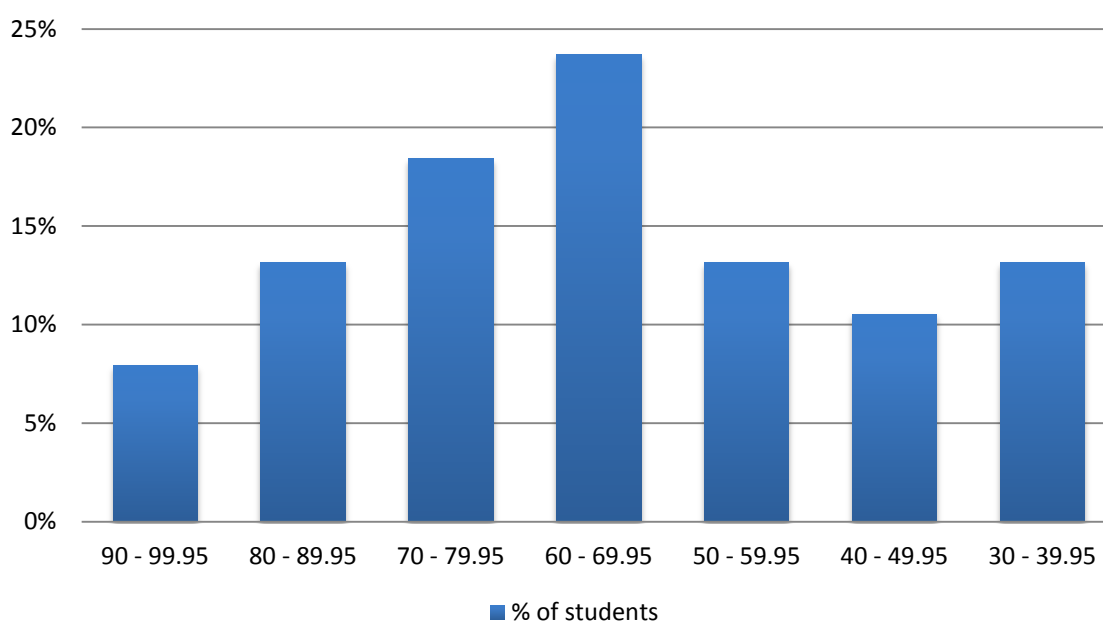
Art, Biology, Business Management, Chemistry, English, Further Mathematics, Health and Human Development, History: Revolutions, Legal Studies, Literature, Mathematical Methods, Media, Outdoor and Environmental Studies, Physical Education, Physics, Production Design and Technology, Psychology, and Visual Communication Design.

Bayside Christian College allows students to choose one of two pathways and we endeavour to support them in their respective choices. We understand that as a part of the varied giftedness of students, some are more suited to success in an academic VCE program whilst others are better suited to an applied learning environment such as the VCAL program. In 2017, ten Year 12 students completed their Senior VCAL certificate and a total of 39 students completed the VCE.

Of the students who completed the VCE and received an ATAR, the results were as follows:

ATAR Range	% of students
90 - 99.95	8%
80 - 89.95	13%
70 - 79.95	18%
60 - 69.95	24%
50 - 59.95	13%
40 - 49.95	11%
30 - 39.95	13%

Class of 2017 - VCE ATAR Scores



All Year 10 VCAL students complete a Cert I in Employment Pathways, and Year 11 VCAL students complete a Cert II in Business.

In addition, 16 of our senior students (in Years 11 and 12) also completed specific Vocational Education and Training (VET) Certificates. These certificates were completed through a range of providers, including Chisholm Institute and the Peninsula VET (PVET) cluster. Five students completed the Vetamorphus ministry training program; seven students also completed School-Based Apprenticeships through E-Focus, VFA Learning, and Lightmare Studios; and, one student was engaged in a workplace-based apprenticeship.

The qualifications awarded to Bayside Christian College students during 2017 included:

- Cert II in Applied Fashion Design Technology
- Cert III in Beauty Services
- Cert III Christian Ministry & Theology
- Cert III in Digital Media & Technology
- Cert III in Early Childhood Education
- Cert III Equine Studies
- Cert III Fitness
- Cert III in Individual Support
- Cert II Outdoor Recreation



Post-School Destinations (Year 12, 2017)

Most of the 49 students completing Year 12 in 2017 have enrolled in tertiary study in 2018, with some choosing to defer their studies until 2019. Of the 37 students who applied for tertiary entry through VTAC, 30 received first round offers. Twenty-one of these students received offers for either their first or second course preference.

Some other students chose to go straight into the workforce.

Satisfaction Surveys

Each year, Bayside Christian College uses a range of mechanisms to seek student and parent feedback. Every three or so years this has included a Community Health Audit (the last one was in 2016). In 2017, the primary feedback mechanism was the Family Exit Surveys. The main areas of satisfaction in respondent surveys include the Christian community, welcoming and supportive environment, great communication, and the VCAL program. In a majority of surveys there are not areas of concern. Comments expressing concerns included the need for more support for students with additional learning needs, inconsistent pastoral care, and changes to College student social events over time. As we continue to monitor and review these areas, it is hoped that we will be able to develop strategies to improve our practice.

Bayside Christian College is a school with its own particular approach to Christian schooling. What is clear in these surveys is that the College has improved in communicating its approach to Christian schooling and, while there are areas for improvement, there is an increasing level of understanding and appreciation for our focus on embedding our beliefs throughout schooling practice.



Funding Information

The total operating income was \$10,086,445. This was significantly higher than the 2016 income of \$8419,254. The increase is due to a higher enrolment and accompanying increased Government grants and higher income from tuition fees. Of the total income, Government grants make up 66.6% (2016:64.4%), tuition fees 31.9% (2016:30.2%) and other income 1.5% (2016:5.4%).

During 2017, the College has been blessed by the upgrading or completion of the following projects:

120-128 Robinsons Road

- Outside seating area for the canteen and Years 11/12 Study Centre
- Acoustic panels and heating in the G Block gym
- Acoustic panels and heating in the U Block gym
- Playground fall protection barrier installed
- Rubber matting added to the playground pathway
- New AFL goal post padding on the oval posts
- Upgrading of the cross country track
- New signage and upgrading concrete paths and kerbing
- Installation of automatic watering systems at various locations
- Tree audit and maintenance completed
- Completed roof and concrete cleans
- Repainted line markings in the car parks and roadways.

97 Robinsons Road

- Completion of the Trades Skills Centre building and potting shed
- Completion of the TSC outdoor areas including fencing for the grow out area
- Installation of a rain water tank and concrete pathways
- Completion of the roadways and car park project including lighting
- Completion of the Years 7/8 Building project
- Completion of landscaping along the roadways and around the TSC building
- Mulching around the native trees and shrubs.

Some of the projects planned for 2018 include:

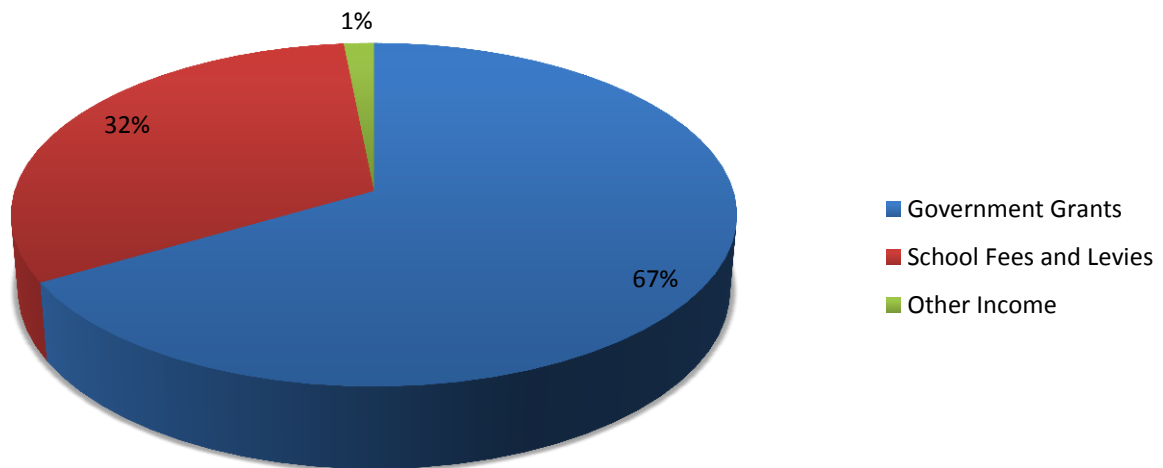
- Upgrade further pathway areas and concrete kerbing
- Landscaping, tree planting with additional seating areas and shade
- Bike shelter
- Build the Science Building at 97 Robinsons Road



Income

2017 INCOME SUMMARY	INCOME (\$)	PERCENTAGE OF INCOME
Tuition Fees	3,217,600	31.9%
Government Grants	6,714,356	66.6%
Other Income	154,489	1.5%
TOTAL	\$10,086,445	100.0%

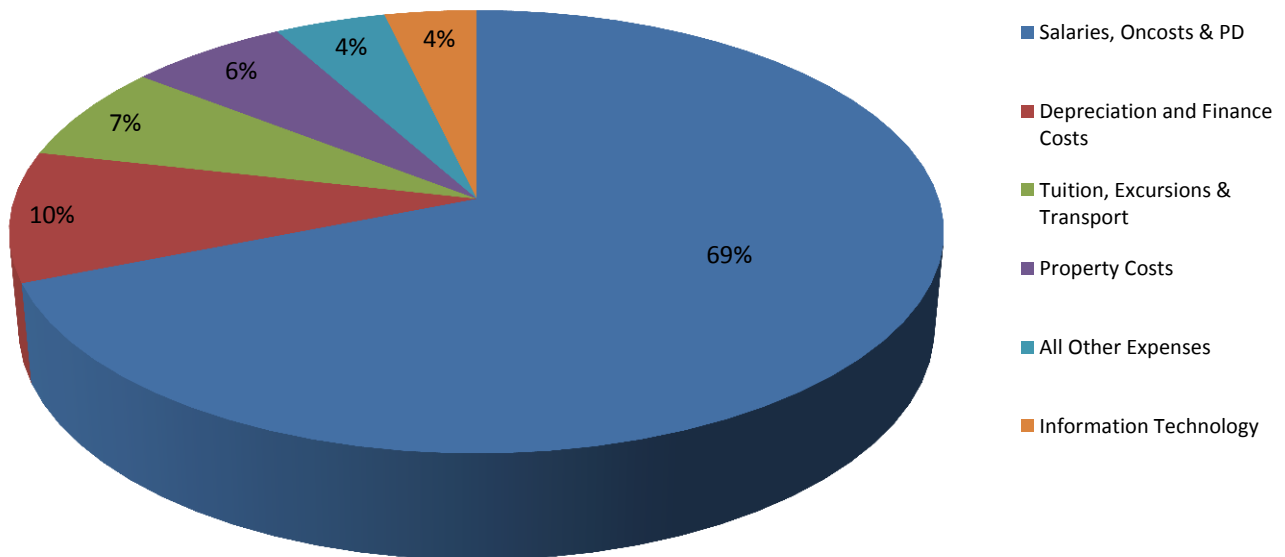
2017 Income Summary



Expenditure

2017 EXPENDITURE SUMMARY	EXPENDITURE (\$)	PERCENTAGE OF EXPENDITURE
Salaries, Oncost, Professional Development (PD)	6,297,211	69.0%
Depreciation and Finance Costs	867,696	9.5%
Information Technology	335,704	3.7%
Tuition Costs – Departments/Faculties	641,087	7.0%
Property Costs	580,222	6.4%
All Other Expenses	404,790	4.4%
TOTAL EXPENSES FROM ORDINARY ACTIVITIES	\$9,126,710	100.0%

2017 Expenditure Summary





Bayside Christian College

120-128 Robinsons Road

Langwarrin South VIC 3911

☎ (03) 5971 6700

✉ info@baysideecc.vic.edu.au

🌐 www.baysideecc.vic.edu.au